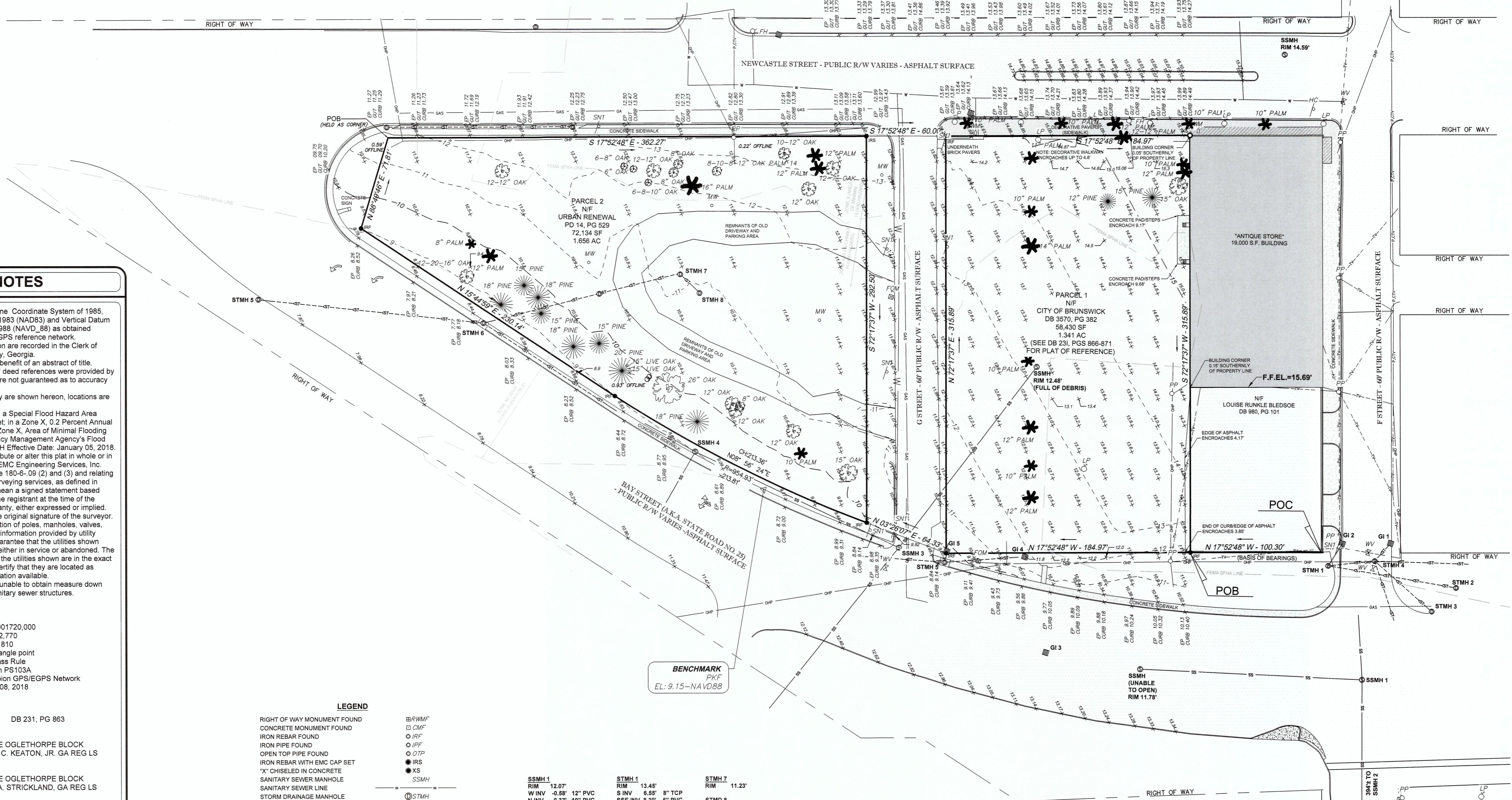


UTILITY LOCATION DISCLAIMER

THE UTILITIES ARE SHOWN AS PER THE LOCATION OF POLES, MANHOLES, VALVES, PEDESTALS, ETC. EXISTING DRAWINGS AND INFORMATION PROVIDED BY UTILITY PERSONNEL. THE SURVEYOR MAKES NO GUARANTEE THAT THE UTILITIES SHOWN COMPRISE ALL SUCH UTILITIES IN THE AREA, EITHER IN SERVICE OR ABANDONED. THE SURVEYOR FURTHER DOES NOT WARRANT THAT THE UTILITIES SHOWN ARE THE EXACT LOCATION INDICATED, ALTHOUGH HE DOES CERTIFY THAT THEY ARE LOCATED AS ACCURATELY AS POSSIBLE FROM INFORMATION AVAILABLE.

RESERVED FOR RECORDING INFORMATION



SURVEY NOTES

- Horizontal Datum is Georgia State Plane Coordinate System of 1985, East Zone, North American Datum of 1983 (NAD83) and Vertical Datum is North American Vertical Datum of 1988 (NAVD_88) as obtained through GPS observation using the EGSN reference network.
- All deed book references shown hereon are recorded in the Clerk of Superior Court's office of Glynn County, Georgia.
- This survey was prepared without the benefit of an abstract of title. Subject and adjacent property owners' deed references were provided by EMC Engineering Services, Inc. and are not guaranteed as to accuracy or completeness.
- Structures visible on the date of survey are shown hereon, locations are accurate only where dimensioned.
- This property is located in a Zone AE, a Special Flood Hazard Area having a Base Flood Elevation of 9 feet; in a Zone X, 0.2 Percent Annual Chance Flood Hazard Area; and in a Zone X, Area of Minimal Flooding Hazard Area per the Federal Emergency Management Agency's Flood Insurance Rate Map No. 131270228H Effective Date, January 05, 2018.
- No person may copy, reproduce, distribute or alter this plat in whole or in part without the written permission of EMC Engineering Services, Inc.
- The term "Certification" as used in Rule 150-6-.09 (2) and (3) and relating to professional engineering or land surveying services, as defined in O.C.G.A. 43-15-2 (6) and (11), shall mean a signed statement based upon facts and knowledge known to the registrant at the time of the survey and is not a guarantee or warranty, either expressed or implied.
- This survey is valid only if it has the original signature of the surveyor.
- The utilities as shown are per the location of poles, manholes, valves, pedestals, etc., existing drawings and information provided by utility personnel. The surveyor makes no guarantee that the utilities shown comprise all such utilities in the area, either in service or abandoned. The surveyor further does not warrant that the utilities shown are in the exact location indicated, although he does certify that they are located as accurately as possible from the information available.
- Unless otherwise noted, this firm was unable to obtain measure down information on storm drainage and sanitary sewer structures.

SURVEY DATA

E.O.C. Plat Parcel 1:	1 in 1,001,720,000
E.O.C. Plat Parcel 2:	1 in 422,770
E.O.C. Field:	1 in 78,810
Angular Error:	1" per angle point
Adjusted by:	Compass Rule
Equipment used:	Topcon PS103A Champion GPS/EGPS Network
Field Work Completed on:	March 08, 2018

- REFERENCES**
- DB 231, PG 856 DB 231, PG 861 DB 231, PG 863
 - DB 980, PG 101 PD 14, PG 529
 - PLAT ENTITLED "A SURVEY OF THE OGLETHORPE BLOCK PROJECT" PREPARED BY JOSEPH C. KEATON, JR. GA REG LS #2233, DATED 8-31-05.
 - PLAT ENTITLED "A SURVEY OF THE OGLETHORPE BLOCK PROJECT" PREPARED BY HARRY A. STRICKLAND, GA REG LS #2409, DATED 12-23-05.
 - PLAT ENTITLED "OGLETHORPE BLOCK PROJECT" BY THIS FIRM DATED 05-04-2016.

LEGEND

RIGHT OF WAY MONUMENT FOUND	□ BRWMF
CONCRETE MONUMENT FOUND	□ CMF
IRON REBAR FOUND	○ IRF
IRON PIPE FOUND	○ IRP
OPEN TOP PIPE FOUND	○ OTP
IRON REBAR WITH EMC CAP SET	● IRS
"X" CHISELED IN CONCRETE	● XS
SANITARY SEWER MANHOLE	● SSMH
SANITARY SEWER LINE	— SSMH
STORM DRAINAGE MANHOLE	○ STMH
STORM SEWER LINE	— STMH
CATCH BASIN	□ CB
FIRE HYDRANT	○ FH
FIRE DEPARTMENT CONNECTION	○ FDC
WATER VALVE	○ WV
WATER METER	○ WM
WATER LINE	— WL
MONITORING WELL	○ MW
GAS LINE MARKER	■ GML
GAS LINE	— GL
FIBER OPTIC LINE MARKER	■ FOM
POWER POLE	□ PP
LIGHT POLE	□ LP
GUY WIRE ANCHOR	○ GWA
TRAFFIC SIGNAL POLE	○ TSP
OVERHEAD POWER LINE(S)	— OPL
OVERHEAD COMMUNICATION LINE(S)	— OCL
OVERHEAD POWER AND COMMUNICATION LINES	— OPL/CL
EDGE OF PAVEMENT	— EP
GUTTER	— GUT
POINT OF COMMENCEMENT	● POC
POINT OF BEGINNING	● POB

SSMH 1 RIM 12.07' W INV 0.58' 12" PVC N INV -0.37' 10" PVC E INV -0.48' 12" PVC	STMH 1 RIM 13.45' S INV 6.55' 8" TCP SSE INV 8.30' 8" PVC E INV 5.70' 8" TCP	STMH 7 RIM 12.23'
SSMH 2 RIM 7.95' E INV 3.25' 12" PVC W INV 4.82' 12" PVC	STMH 2 RIM 13.16' N INV 7.37' 8" PVC	STMH 8 RIM 11.80'
SSMH 3 RIM 9.25' N INV 1.88' 12" PVC E INV 3.70' 12" PVC W INV 1.77' 12" PVC	STMH 3 (CATCH BASIN) RIM 11.87' WEIR 10.84' N INV 5.72' 18" RCP SW INV 5.77' 18" RCP	GI 1 GRATE 13.21 NW INV 10.11' 12" TCP
SSMH 4 RIM 9.25' S INV 1.77' 12" PVC W INV 1.88' 12" PVC N INV 3.70' 12" PVC	STMH 4 RIM 13.17' NW INV 7.31' 18" RCP W INV 5.31' 12" TCP SW INV 10.07' 12" TCP S INV 8.12' 12" TCP SE INV 8.18' 12" TCP	GI 2 GRATE 13.16' NW INV 11.29' 12" TCP E INV 11.31' 12" RCP
SSMH 5 RIM 7.85'	STMH 5 RIM 8.41'	GI 3 GRATE 11.38'
SSMH 6 RIM 8.41'	STMH 6 RIM 8.41'	GI 4 GRATE 11.72'
		GI 5 GRATE 10.18' W INV 6.31' 8" TCP
		GI 6 GRATE 8.80' N INV 2.29' 24" RCP E INV 6.10' 8" TCP S INV 3.39' 18" RCP

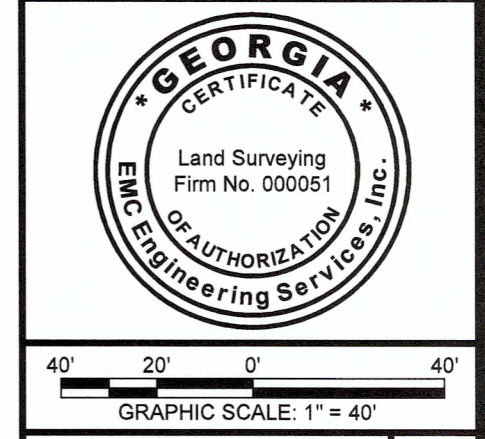
GA SURVEYOR'S CERTIFICATE

This plat is a retracement of an existing parcel or parcels of land and does not subdivide or create a new parcel or make any changes to any real property boundaries. The recording information of the documents, maps, plats, or other instruments which created the parcel or parcels are stated hereon. RECORDATION OF THIS PLAT DOES NOT IMPLY APPROVAL OF ANY LOCAL JURISDICTION, AVAILABILITY OF PERMITS, COMPLIANCE WITH LOCAL REGULATIONS OR REQUIREMENTS, OR SUITABILITY FOR ANY USE OR PURPOSE OF THE LAND. Furthermore, the undersigned land surveyor certifies that this plat complies with the minimum technical standards for property surveys in Georgia as set forth in the rules and regulations of the Georgia Board of Registration for Professional Engineers and Land Surveyors and as set forth in O.C.G.A. Section 15-6-67.

Matthew G. Jennings, GA RLS No. 063222

6-19-18 DATE

NO.	REVISION DESCRIPTION	BY	DATE



EMC ENGINEERING SERVICES, INC.

504 Gloucester Street
Brunswick, GA 31520
Phone: (912) 233-1680
Fax: (912) 233-1680
www.emc-eng.com

CIVIL MARINE ENVIRONMENTAL

OFFICE LOCATIONS: ALBANY, ATLANTA, AUGUSTA, BRUNSWICK, COLUMBUS, SAVANNAH, STATESBORO, AND VALDOSTA

BOUNDARY RETRACEMENT AND TOPOGRAPHIC SURVEY

OGLETHORPE BLOCK PROJECT

26TH G.M. DISTRICT
BRUNSWICK, GLYNN COUNTY, GA

Prepared for:
CITY OF BRUNSWICK

PROJECT NO.: 18-5013

DRAWN BY: MGJ

DESIGNED BY: -

SURVEYED BY: JH

SURVEY DATE: 03-08-2018

CHECKED BY: MGJ

SCALE: 1" = 40'

DATE: 05-09-2018

SHEET 1 OF 1

03/19/2018 18:50:13 OGLETHORPE BLOCK.DWG(18-5013_V_T01.DWG 6/19/2018 3:36 PM