



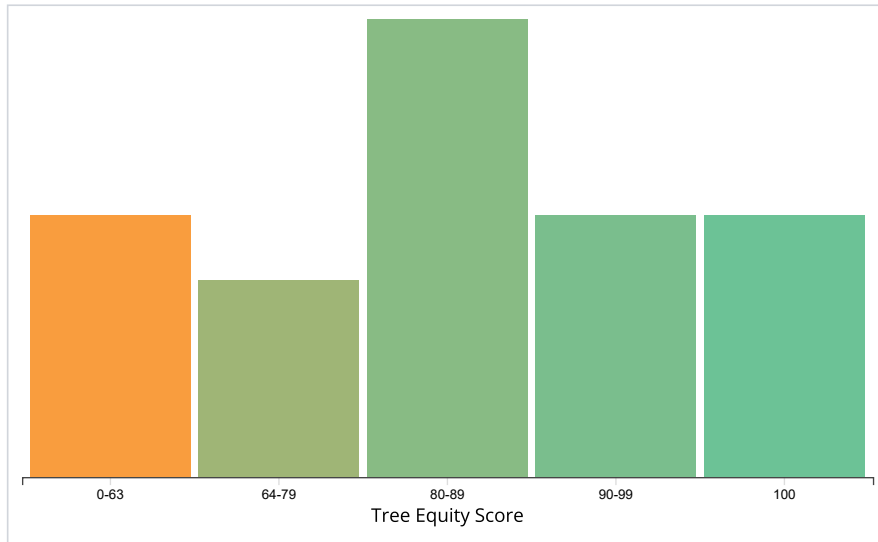
Brunswick

Tree Equity Score: 81

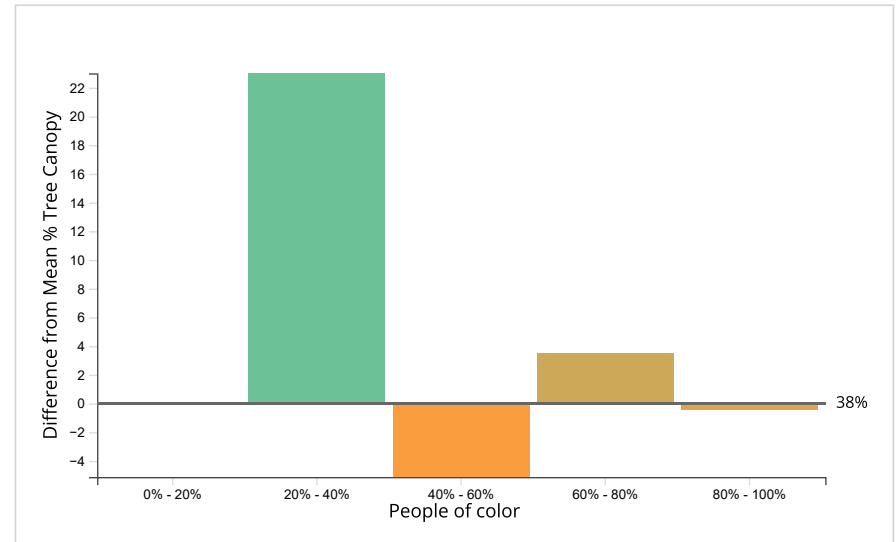
Urbanized Area Summary

Urbanized area population	24,103	Seniors	16%
People of color	67%	Children	25%
People in poverty	62%	Unemployment rate	9%

Distribution of Tree Equity Scores



Tree Canopy % vs. People of Color %



Each bar represents the mean tree canopy % for block groups within the specified range of people of color. The amount above or below the thick horizontal line indicates the difference from the area-wide mean canopy %.

Rhode Island

Greater Phoenix

San Francisco Bay
Area

Greater Houston

Greater Detroit

Washington, DC
Metro

Tree Equity Score

A map of tree cover in any city in the United States is too often a map of race and income. This is unacceptable. Trees are critical infrastructure that every person in every neighborhood deserves. Trees can help address damaging environmental inequities like air pollution.

The score evaluates data from each neighborhood's:



Existing tree canopy



Population density



Income



Employment



Surface temperature



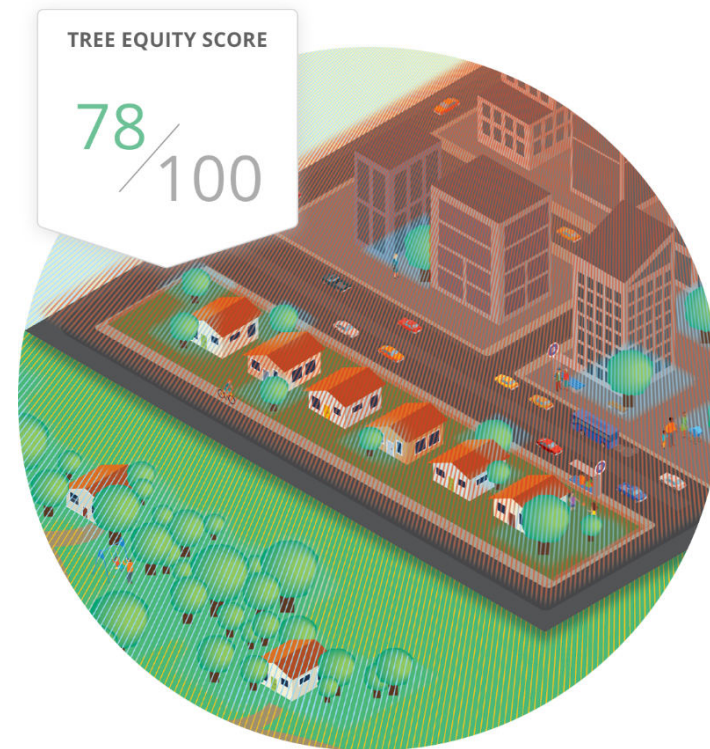
Race



Age



Health



These metrics are combined into a single score between 0 and 100. A score of 100 means that a neighborhood has achieved Tree Equity. To learn more, visit our [methodology page](#).

Introducing the Tree Equity Score Analyzer

American Forests has developed the Tree Equity Score Analyzer (TESA) for cities and states that want to dive deep into decision-making around Tree Equity Scores.

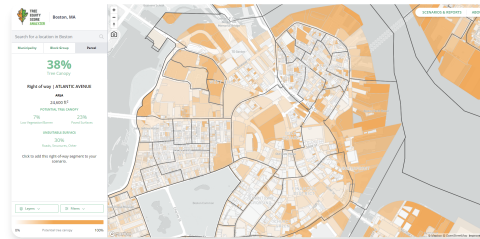
Features

Explore municipalities, city parcels, and more.

Dive deep with environmental, climate, demographic, and health data.

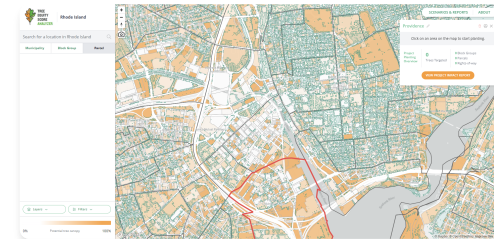
Build, save, and share custom tree planting scenarios.

Learn more



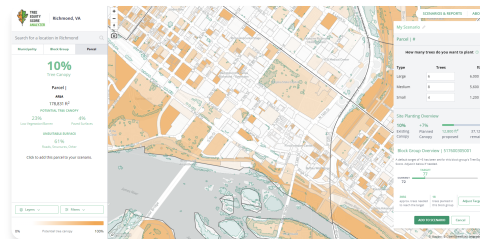
TESA Boston

LAUNCH



TESA Rhode Island

LAUNCH



TESA Richmond, VA

LAUNCH

Join the Movement

Want to work with American Forests to calculate the Tree Equity Scores for your neighborhood? Want to create a TESA for your city or state? Reach out to our team today to find out how we

Every gift helps American Forests restore damaged wildland and urban forests – for people, for wildlife, for the planet. Give today and help us protect forests for tomorrow. A contribution of any amount can have a big impact.

can work together! And join the conversation on social media,
using #TreeEquity.

[DONATE TODAY](#)

[JOIN US](#)



1220 L Street, NW, Suite 750
Washington, DC 20005
Phone: 202.737.1944
Fax: 202.737.2457



Tree canopy data provided
by [EarthDefine](#).

© 2023 American Forests.
All Rights Reserved.
[Privacy Policy](#).

