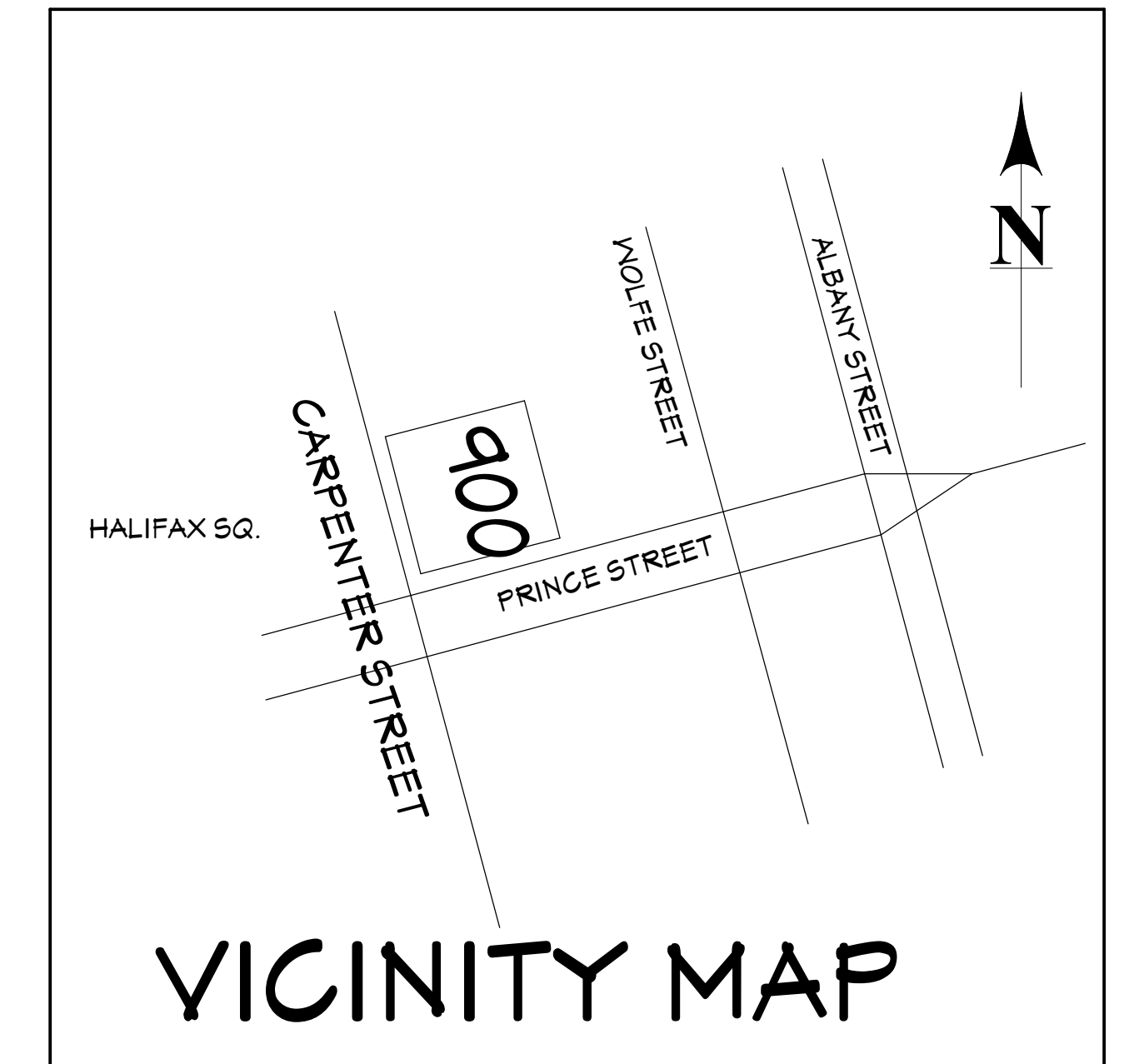
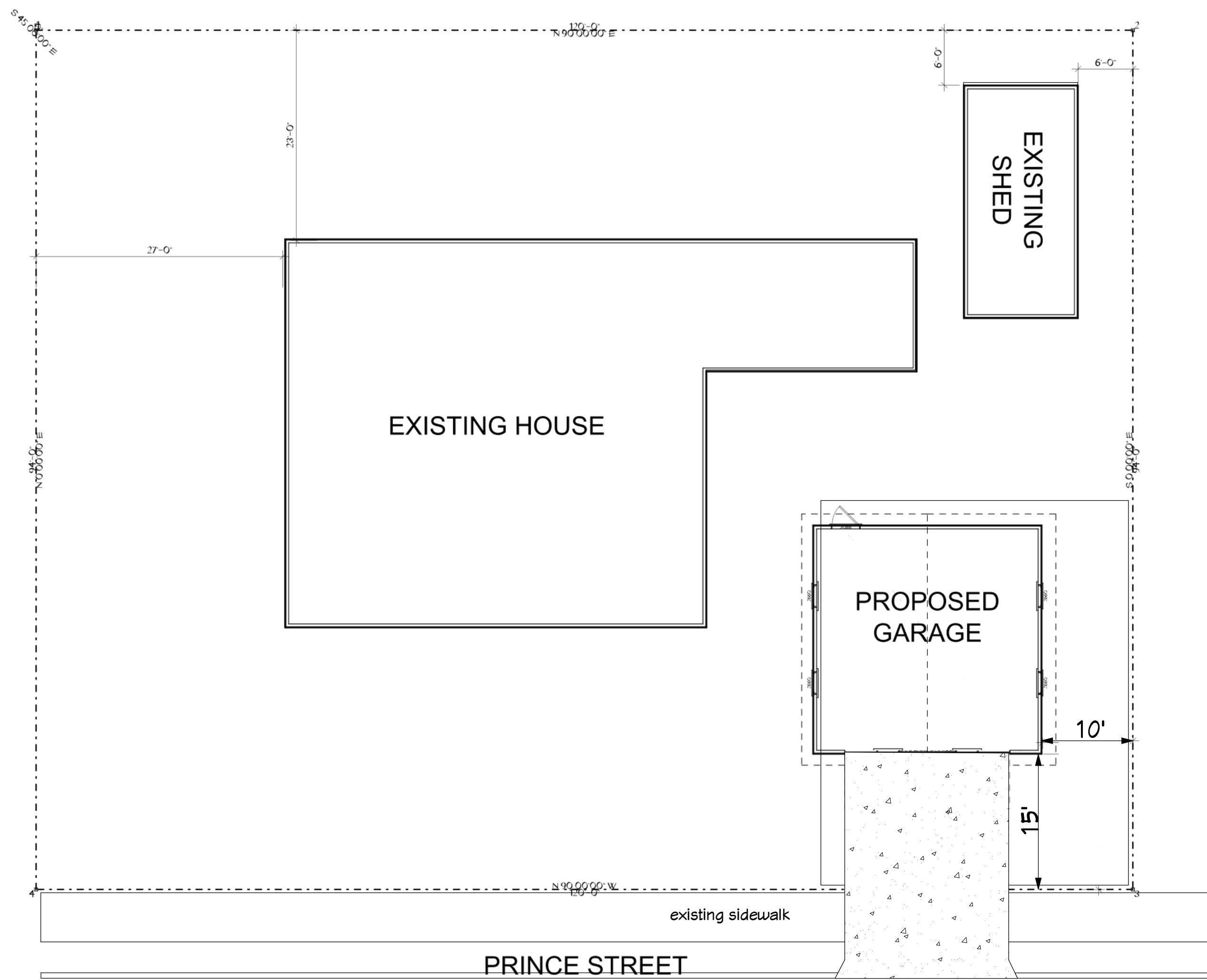


GENERAL NOTES:

1. VERIFY ALL SITE DIMENSIONS AND ADJUST GARAGE LOCATION AS NEEDED FOR LOCAL CODE COMPLIANCE.
2. EXTERIOR FINISHES SHALL MIMIC THE MAIN HOUSE: FRIEZE, FACIA, AND SKIRT BOARDS TO BE 5/4 X WIDTH OF EXISTING TRIM
3. REPLICATE EXISTING RAFTER TAILS.
4. GABLE BRACKET TO MATCH MAIN HOUSE
5. ATTACH STRUCTURE TO CONCRETE SLAB WITH MUDSILL ANCHORS @ 21" O.C.
6. APPLY METAL STRAPPING TO ATTACH EACH FLOOR/CEILING JOISTS ACROSS PLATES TO STUDS AND LIKE WISE FOR ROOF RAFTERS TO DOUBLE PLATE AND 2ND STORY STUD WALL
7. INSTALL DOUBLE 2X4 DIAGONAL BRACING FULL HEIGHT AT GABLE END WALLS FOR HIGH WIND LOADING. CONNECT TO HORIZONTAL JOIST BRACING.

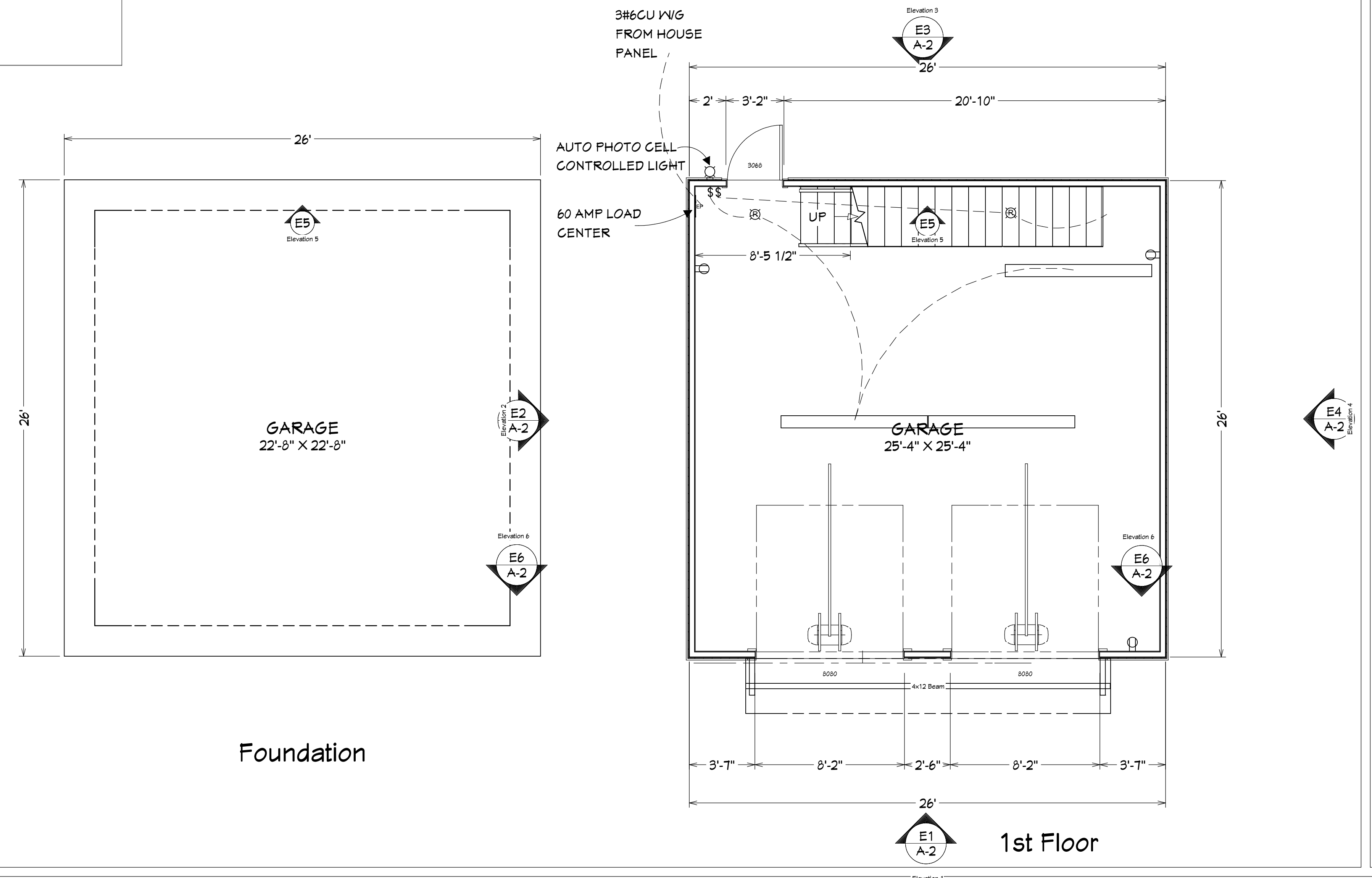


CARPENTER STREET



SITE PLAN

N.T.S.



Foundation

1st Floor

REVISION TABLE	NUMBER	DATE	REVISOR	DESCRIPTION

PLANS AND NOTES

AGARAGE FOR:
900 CARPENTER STREET
BRUNSWICK, GEORGIA

DRAWINGS PROVIDED BY:
SSI ENTERPRIZES

DATE:

11/23/21

SCALE:

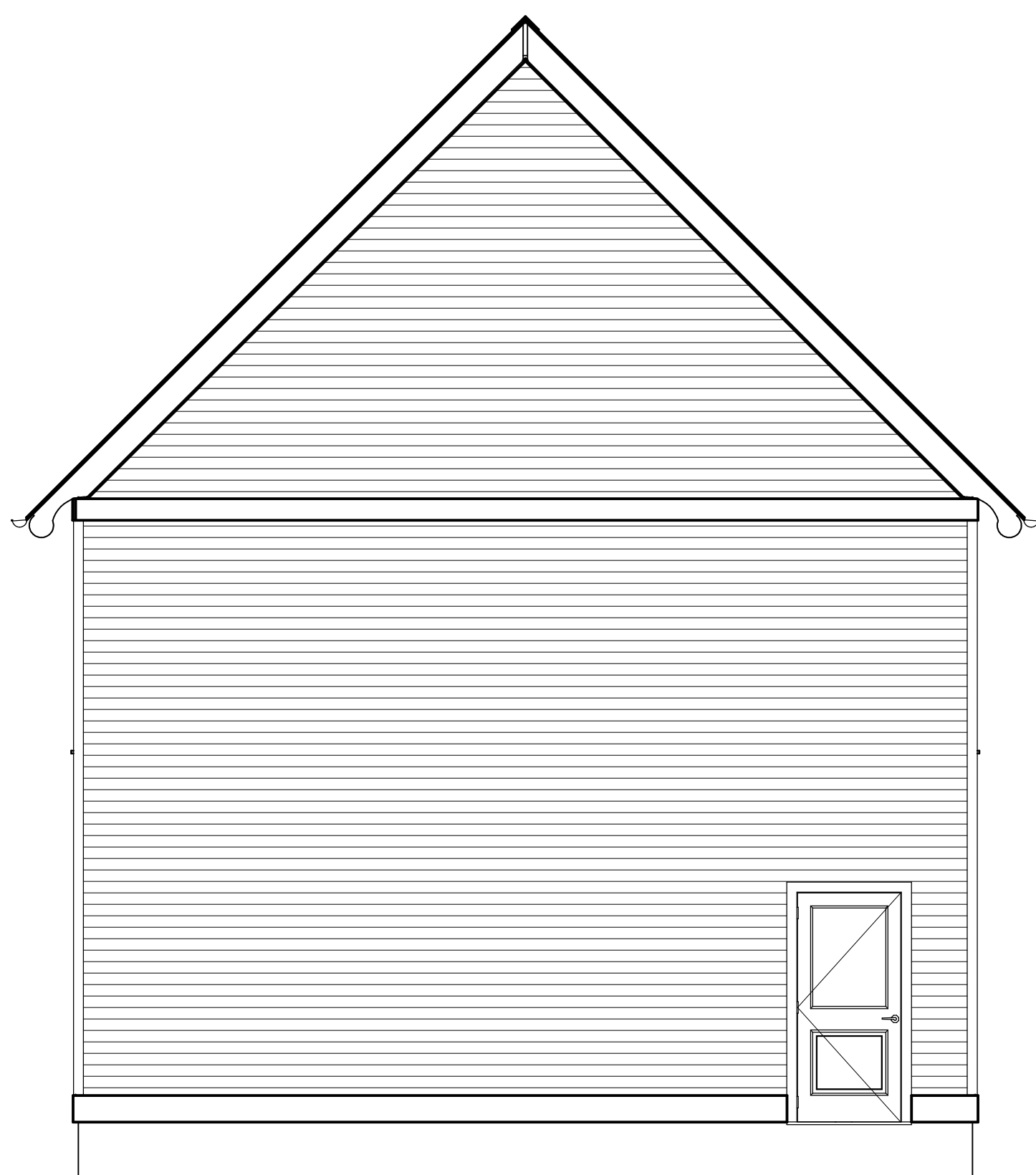
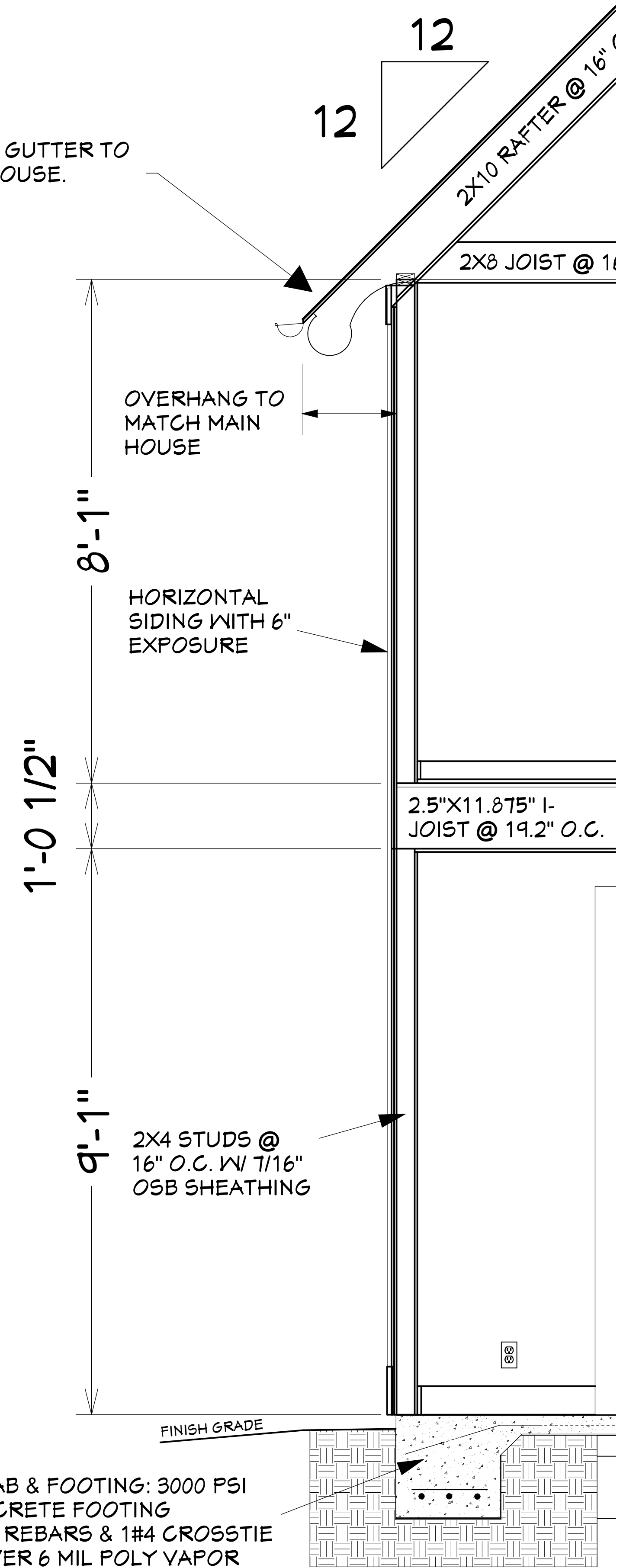
1/4"=1'-0"

SHEET:

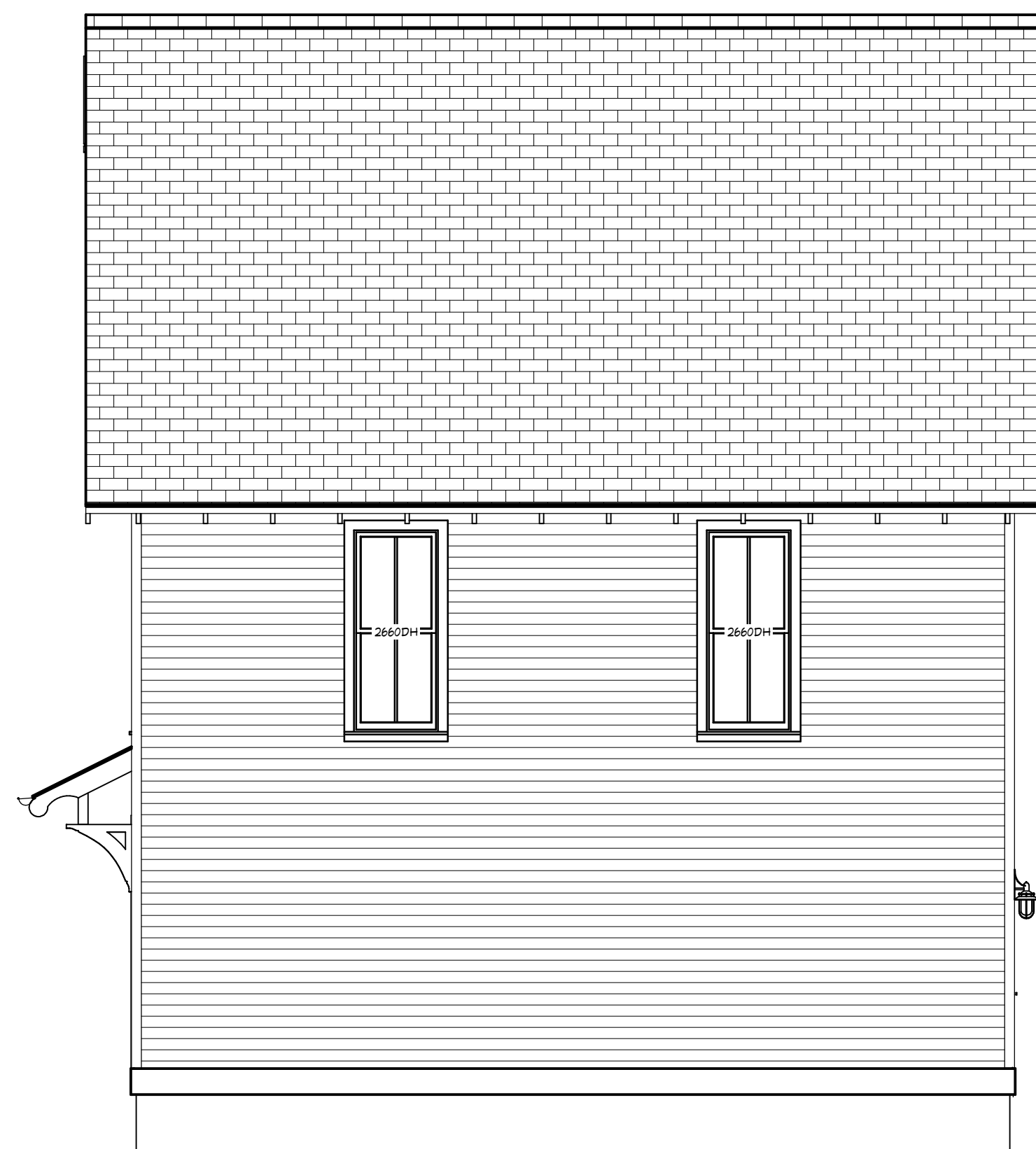
A-1

FIBERGLAS REINFORCED
ASHPALT SHINGLES OVER 7/16"
OSB WITH 30# BUILDING PAPER

RAFTER TAILS AND GUTTER TO
MATCH EXISTING HOUSE.



Elevation 3



Elevation 4



Elevation 2



Elevation 1

REVISION TABLE	NUMBER	DATE	REVISION BY	DESCRIPTION

ELEVATIONS

AGARAGE FOR:
900 CARPENTER STREET
BRUNSWICK, GEORGIA

DRAWINGS PROVIDED BY:
SSI ENTERPRIZES

DATE:
11/23/21

SCALE:
1/4"=1'-0"

SHEET:
A-2